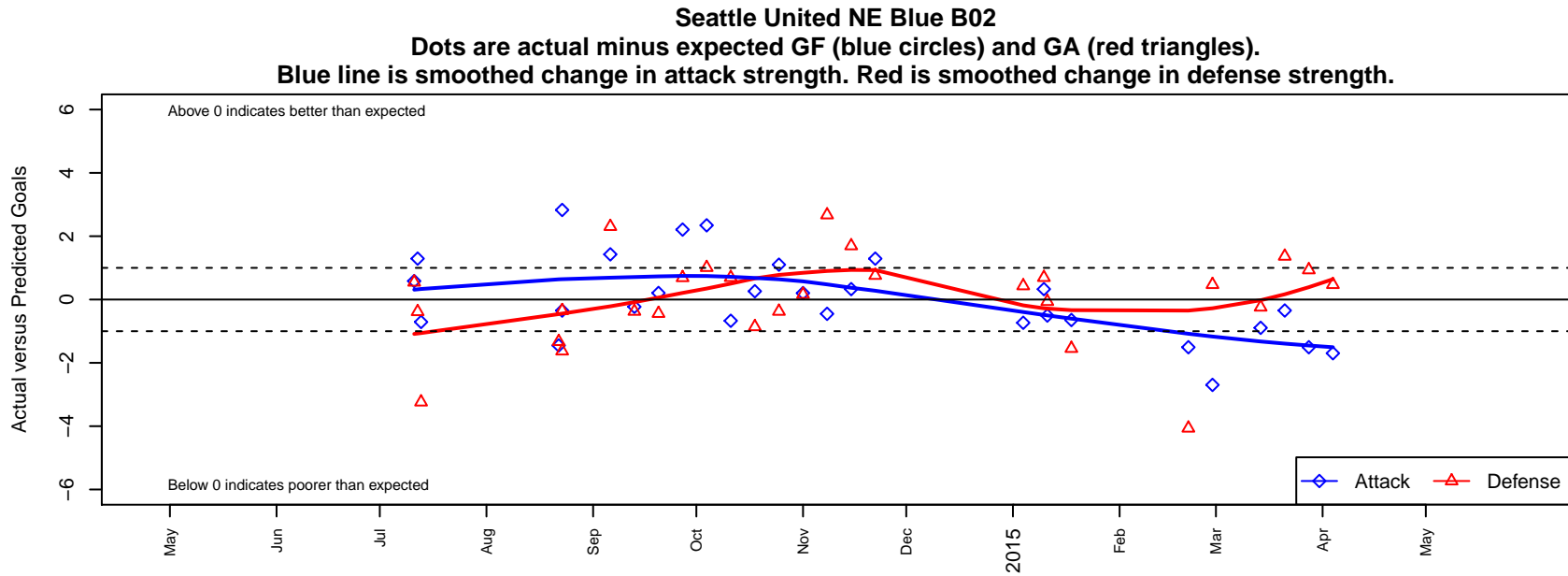


Seattle United NE Blue B02

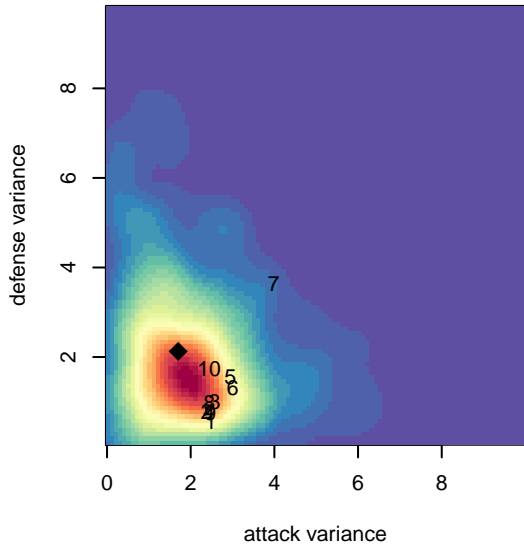
Seattle United Regional
 Seattle, WA
 B02 total strength=467
 attack=0.34 defense=0.3
 fall league = NPSL B12D1
 spr league = Spr NPSL B12D2

alt names used:
 SEATTLE UNITED NE B02 BLUE (WA)
 SU NE Blue [B02]
 Seattle United NE B02 Blue
 Seattle United NE B02 Blue
 Seattle United NE B02 Blue

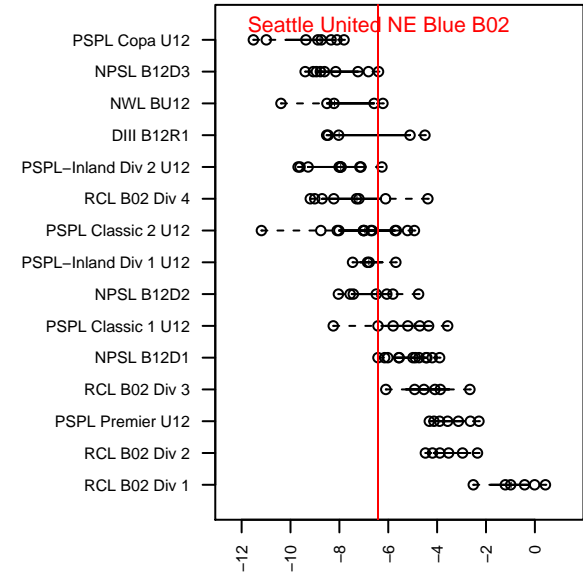
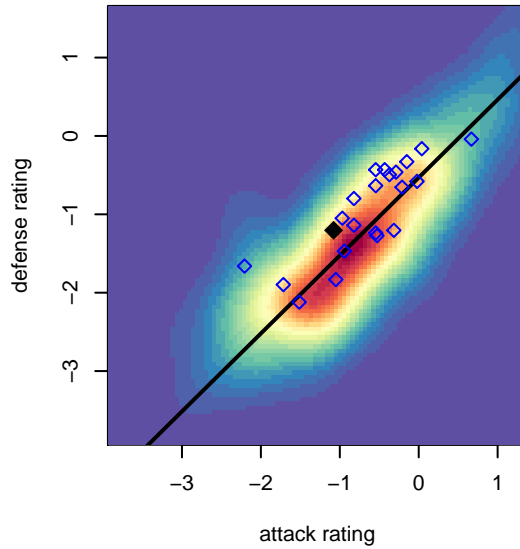
Venues played:
 2014 Seattle Cup BU12
 2014 REDAPT Cup Gold U12
 2014 NPSL B12D1
 2014 Founders Cup B02
 2014 Spr NPSL B12D2



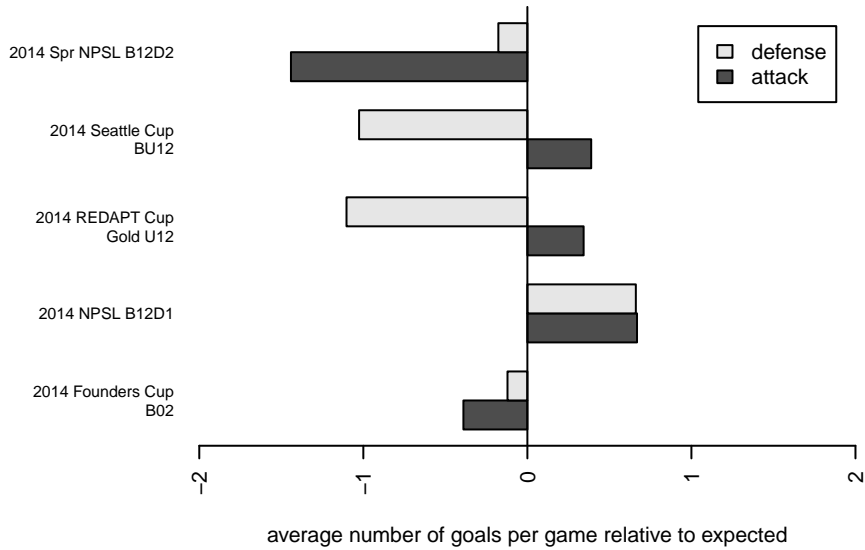
**attack and defense variance (black dot)
relative to other teams
and top 10 in region**



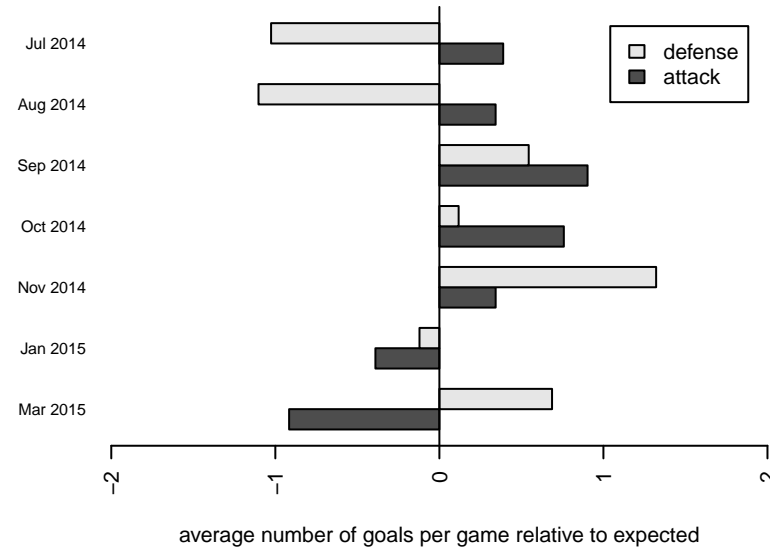
**attack and defense rating
relative to others at age
and all opponents in last 13 months**



Performance relative to 13 month average



Performance relative to 13 month average



date	home		away		venue	pred.home	pred.away
2015-04-04	Seattle United NE Blue B02	1	Mercer Island FC Strikers B02	0	2014 Spr NPSL B12D2	2.70	0.47
2015-03-28	Seattle United W White B02	1	Seattle United NE Blue B02	0	2014 Spr NPSL B12D2	1.94	1.51
2015-03-21	Seattle United NE Blue B02	1	WS Wildcats B02	0	2014 Spr NPSL B12D2	1.35	1.37
2015-03-14	BYSC Select B02	1	Seattle United NE Blue B02	3	2014 Spr NPSL B12D2	0.76	3.89
2015-02-28	Mercer Island FC Strikers B02	0	Seattle United NE Blue B02	0	2014 Spr NPSL B12D2	0.47	2.70
2015-02-21	Seattle United NE Blue B02	0	Seattle United W White B02	6	2014 Spr NPSL B12D2	1.51	1.94
2015-01-18	Seattle United NE Blue B02	0	South Tacoma United Blanco B02	4	2014 Founders Cup B02	0.65	2.45
2015-01-11	Seattle United W White B02	2	Seattle United NE Blue B02	1	2014 Founders Cup B02	1.94	1.51
2015-01-10	Seattle United NE Blue B02	1	Kent United Green B02	2	2014 Founders Cup B02	0.67	2.69
2015-01-04	Washington Timbers Burgundy B02	1	Seattle United NE Blue B02	1	2014 Founders Cup B02	1.43	1.73
2014-11-22	Seattle United NE Blue B02	2	Seattle United W Blue B02	2	2014 NPSL B12D1	0.71	2.76
2014-11-15	Kent United Green B02	1	Seattle United NE Blue B02	1	2014 NPSL B12D1	2.69	0.67
2014-11-08	Seattle United S Blue B02	0	Seattle United NE Blue B02	1	2014 NPSL B12D1	2.67	1.45
2014-11-01	Kent United White B02	2	Seattle United NE Blue B02	1	2014 NPSL B12D1	2.16	0.80
2014-10-25	Seattle United NE Blue B02	2	BIFC Blue B02	2	2014 NPSL B12D1	0.90	1.63
2014-10-18	Seattle United NE Blue B02	1	Mercer Island FC Wolfpack B02	3	2014 NPSL B12D1	0.74	2.14
2014-10-11	Kent United Green B02	2	Seattle United NE Blue B02	0	2014 NPSL B12D1	2.69	0.67
2014-10-04	Seattle United NE Blue B02	4	Newport FC Supernova B02	1	2014 NPSL B12D1	1.66	2.01
2014-09-27	Seattle United NE Blue B02	3	Crossfire Select Butler B02	3	2014 NPSL B12D1	0.79	3.69
2014-09-20	Seattle United Shoreline Blue B02	3	Seattle United NE Blue B02	1	2014 NPSL B12D1	2.56	0.79
2014-09-13	NSC Fuego B02	2	Seattle United NE Blue B02	1	2014 NPSL B12D1	1.63	1.23
2014-09-06	Seattle United NE Blue B02	2	Crossfire Select OMelia B02	1	2014 NPSL B12D1	0.57	3.30
2014-08-23	Seattle United NE Blue B02	2	PacNW White B02	3	2014 REDAPT Cup Gold U12	2.35	1.37
2014-08-23	Crossfire Premier D B02	1	Seattle United NE Blue B02	6	2014 REDAPT Cup Gold U12	0.65	3.17
2014-08-22	Seattle United NE Blue B02	0	Seattle United S Blue B02	4	2014 REDAPT Cup Gold U12	1.45	2.67
2014-07-13	Seattle United W Blue B02	6	Seattle United NE Blue B02	0	2014 Seattle Cup BU12	2.76	0.71
2014-07-12	Seattle United NE Blue B02	2	FWFC Blue B02	3	2014 Seattle Cup BU12	0.71	2.62
2014-07-11	Seattle United NE Blue B02	1	Marpole United 2004B	6	2014 Seattle Cup BU12	0.42	6.55